

Capacity	Accuracy	Part-Number
0.5t	C3	BM3-C3-0.5t-3B
1t	C3	BM3-C3-1t-6B
2t	C3	BM3-C3-2t-6B
3t	C3	BM3-C3-3t-6B
4t	C3	BM3-C3-4t-6B
5t	C3	BM3-C3-5t-6B
6t	C3	BM3-C3-6t-6B
7.5t	C3	BM3-C3-7.5t-6B

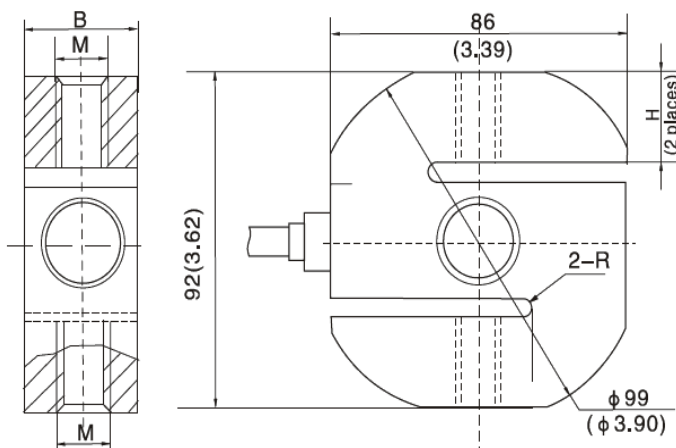


- Single shear beam, stainless steel. Welding sealed,
- Tension applications
- Suitable for hanging scales, hopper scales and other electronic weighing devices

Specification:

Accuracy class		OIML R60 C3
Output sensitivity	mV/V	2.0 ± 0.004
Maximum capacity (E _{max})	t	0.5, 1, 2, 3, 4, 5, 6, 7.5
Maximum number of load cell intervals (n _{LC})		3000
Ratio of minimum LC verification interval Y = E _{max} / V _{min}		12000
MDLOR (Z=E _{max} / 2*DR)		6000
Combined Error	%FS	0.0200
Minimum dead load	kg	0
Safe overload	%FS	150
Zero balance	%FS	< ± 1.0
Excitation, recommended voltage	V	5 ~ 12 DC
Excitation maximum	V	18 DC
Terminal resistance, input	Ω	¹⁾ 350 ± 3.5
Terminal resistance, output	Ω	¹⁾ 350 ± 3.5
Insulation impedance	MΩ	≥5000 (50VDC)
Temperature range, compensated	°C	-10~+40
Temperature range, operating	°C	-35 ~ +65
Element material		Stainless steel
Protection class according to DIN 40050		IP68
Cable Length (4 wire)	m	3m for 0.5t other 6m
Connections:	Red Input(+) Black Input(-) Green Output(+) White Output(-) Transparence (Shield)	

Outline Dimensions in mm (Inch)



Capacity	0.5	1.0	2.0	3.0	4.0	5.0	6.0	7.5
Dimension								
B	32(1.26)	32(1.26)	32(1.26)	32(1.26)	36(1.42)	50(1.97)	50(1.97)	50(1.97)
M	M12×1.75	M12×1.75	M20×1.5	M20×1.5	M20×1.5	M24×2	M24×2	M24×2
H	25(0.98)	25(0.98)	25(0.98)	25(0.98)	25(0.98)	24(0.94)	24(0.94)	24(0.94)