

Complete series of load cells for.

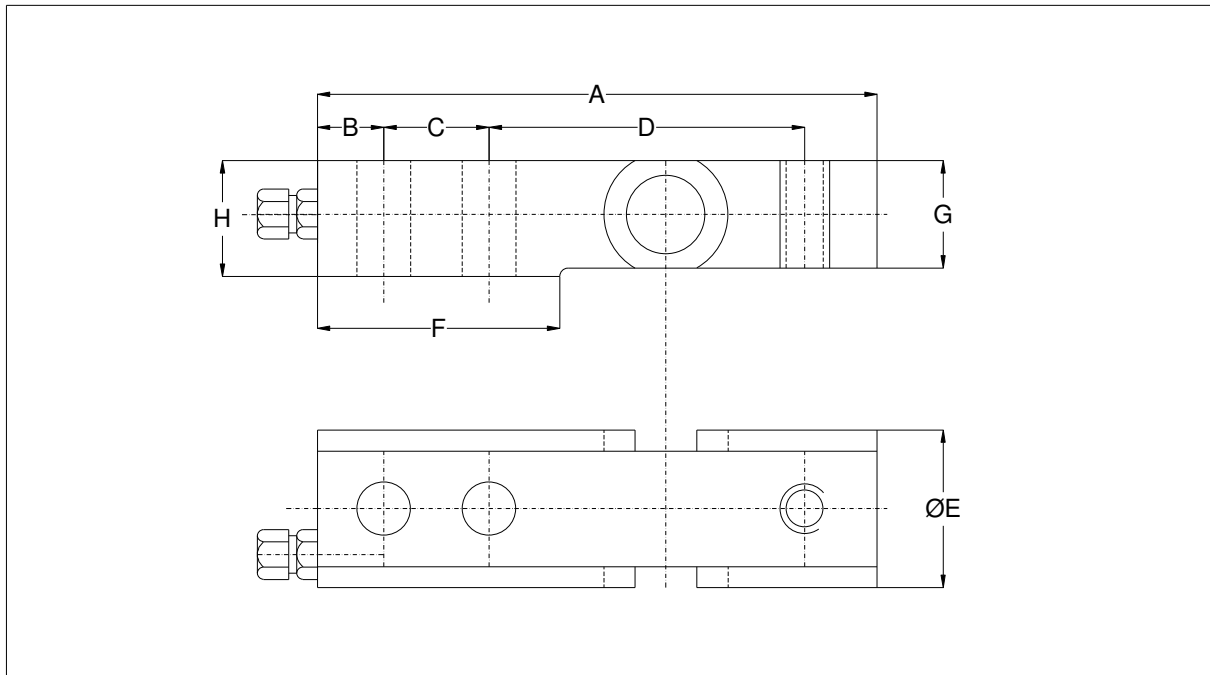
Platforms – Tanks – Hoppers.

Better than 1500 divisions.

Fully welded stainless steel.

Hermetically sealed to IP68.

Capacities: 250Kg – 500Kg - 1t - 2t - 5t – 10t



MODEL	RANGES KG	A	B	C	D	F	G	H	ØI	ØJ	ØE	CABLE M
2250	250 – 1.000	135	17,5	25,4	76,2	55	26	28	13	M12	38,2	4
2250	2.000	135	17,5	25,4	76,2	55	26	28	13	M16	38,2	4
2250	5.000	170	20	38,1	95,3	76	36	39	21	21	50,8	6
2250	10.000	220	26	50,8	120,7	105	46	52	26	26	68	10

<b>Accuracy class</b>	<b>AS, C3 at 20 C.</b>	<b>3000 DIVISIONS</b>
<b>Min. dead load (E<sub>min</sub>)</b>	<b>% of E<sub>max</sub>.</b>	<b>0</b>
<b>Safe load limit (E<sub>lim</sub>)</b>	<b>% of E<sub>max</sub>.</b>	<b>200</b>
<b>Linearity error</b>	<b>%</b>	<b>&lt;+/-0,020</b>
<b>Hysteresis error</b>	<b>%</b>	<b>&lt;+/-0,020</b>
<b>Repeatability</b>	<b>%</b>	<b>&lt;+/-0,015</b>
<b>Temperature effects: Zero</b>	<b>%/°C</b>	<b>&lt;+/-0,0015</b>
<b>Temperature effects: Span</b>	<b>%/°C</b>	<b>&lt;+/-0,0015</b>
<b>Temperature compensation</b>	<b>*C</b>	<b>-10 to +40</b>
<b>Temperature limits</b>	<b>*C</b>	<b>-30 to +70</b>
<b>Sensitivity ( C )</b>	<b>MV/V</b>	<b>2+/-0,1%</b>
<b>Nominal input voltage (Max)</b>	<b>V dc or ac</b>	<b>10 (15)</b>
<b>Input resistance</b>	<b>Ohm</b>	<b>400+/-25</b>
<b>Output resistance</b>	<b>Ohm</b>	<b>350+/-2</b>
<b>No load out put</b>	<b>%</b>	<b>&lt;+/-2</b>
<b>V.min.</b>		<b>E.max./10.000</b>
<b>Insulation resistance</b>	<b>M ohms</b>	<b>&gt;5000</b>

Exe.+ Red    Exe.- Blue    Sig.+ Green    Sig.- Yellow